

Year 3 Geography Knowledge Organiser - Local Study of Liverpool

Selected Vocabulary and Definitions

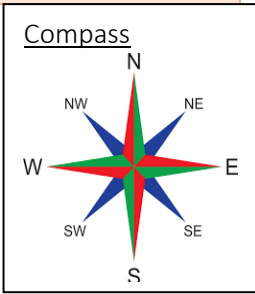
Ordnance Survey	Ordnance Survey is Britain's mapping agency. OS create up to date and accurate maps depicting the landscape's human and physical features.
Grid reference	A grid reference allows someone to mark a place on a map by referring to vertical and horizontal lines
Field work	The process of observing and collecting data about people, cultures, and natural environments.
Physical features	Physical features include: - seas, mountains, rivers and are natural.
Human features	Human features include: - houses, roads and bridges and are things that have been built by people.
Camera	Whilst carrying out your fieldwork, you need to take photographs or make labelled sketches of the place. This will help you remember what you have seen.
Rain gauge	The rain gauge is used to measure rainfall over set periods of time – usually 24 hours. Rainfall isn't measured by volume, instead meteorologists measure the depth of rainfall in millimetres.
Meteorology	The official name for the science of weather is meteorology.
Meteorologist	It's the job of meteorologists to study weather patterns, and forecast (predict) weather and possible extreme weather.
Coastal erosion	Is the wearing away of the land by the sea often involves destructive waves wearing away the coast
Compass	A compass is a tool for finding direction. A simple compass is a magnetic needle mounted on a pivot, or short pin.

Curriculum Objectives

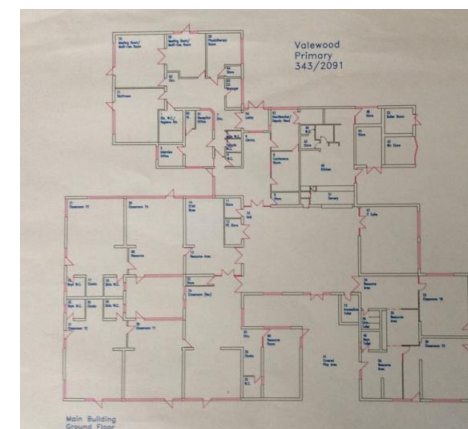
- Can you make plans and maps using symbols and keys?
- Can I explain how field work instruments work? Eg. Rain gauge or keys.
- Can I create sketches and diagrams in fieldwork investigations?

Key Questions

- What are the 8 points of a compass?
- How is Crosby different to Liverpool?
- Can you locate Crosby on a map of the UK and explain its position?



Valewood Primary School



Crosby, Liverpool in the North-West of England



Rain Gauge



Ordnance Survey Map of Crosby.



Symbols and keys



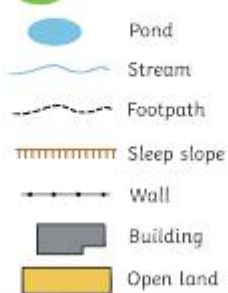
A compass



The magnetic needle, which can spin freely, always points north.

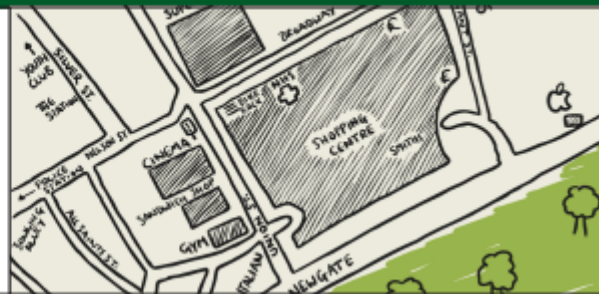
Key

- Maps often use **symbols** to represent things.
- The key explains what the **symbol** shows.

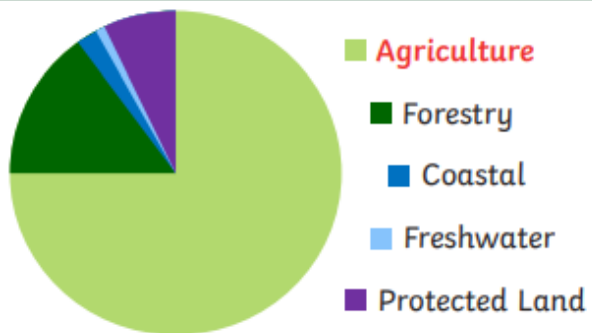


Sketch Map

- Title
- Labels/annotations
- Simple lines
- Enough detail to give a rough idea
- A 'not to scale' note
- A north arrow



How Rural Space Is Used in the UK



How is Land Used?

90% of land in the UK is **rural**.

- Housing
- Factories
- Education
- **Recreation**
- Business
- Farming

10% of the UK is **urban**.

- Housing
- Factories
- Education
- **Recreation**
- Business
- Healthcare
- Transport
- **Retail**

Topographical Map

A topographical map shows the shape and features of the land including mountains, rivers, lakes and valleys.

