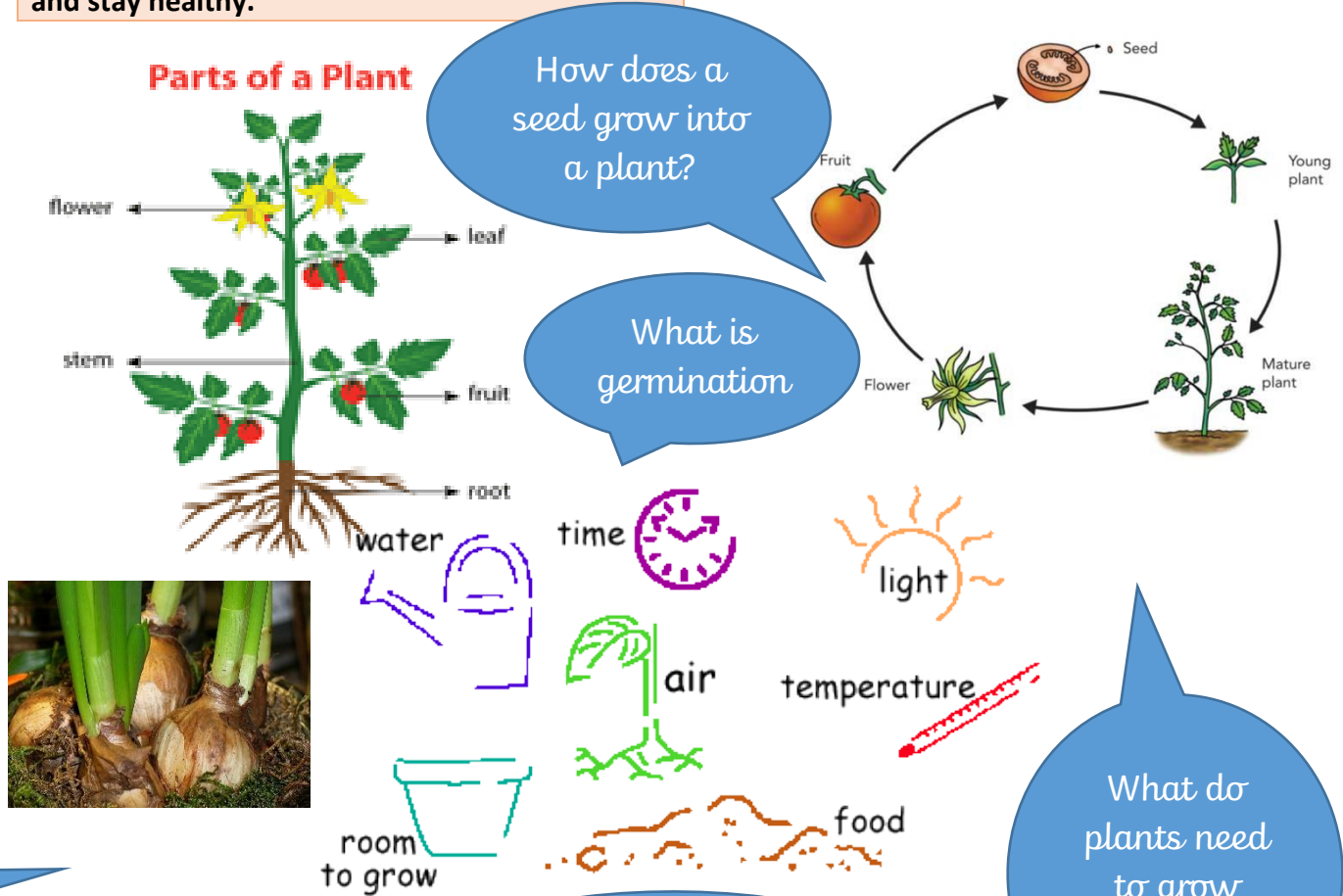


Year 2 Science Knowledge Organiser – Plants

Selected Vocabulary and Definitions	
Seeds	The product of a fruit which can produce another plant
Bulbs	The “seed” of some flowering plants
Roots	Part of a plant that is usually hidden underground. They hold the plant in the ground, keep it upright and take water and food from the soil.
Stem	The stem is the stalk of the plant. It carries water and minerals from the roots to the leaves and carries food to different parts of the plant.
Branches	Branches are parts that grow from the stem.
Leaves	The leaf is one of the most important parts of a plant. Leaves produce food for the plant and come in many different shapes and sizes
Flower	A flower is the part of the plant that blossoms. Flowers produce the seeds that can become new plants.
Temperature	Temperature is a degree of hotness or coldness the can be measured using a thermometer.
Blossom	To produce flowers
Thermometer	A tool to measure the hotness or coldness of something.

Curriculum Objectives
Plants
I can observe and describe how seeds and bulbs grow into mature plants.
I can find out and describe how plants need water, light and a suitable temperature to grow and stay healthy.

Key Knowledge	
Parts of a plant	Roots, stem, flower, leaf, fruit
All plants need:	Water Light Suitable temperate



What is a bulb and how is it different from a seed?

What will happen if a plant has no light?

What do plants need to grow healthily?