

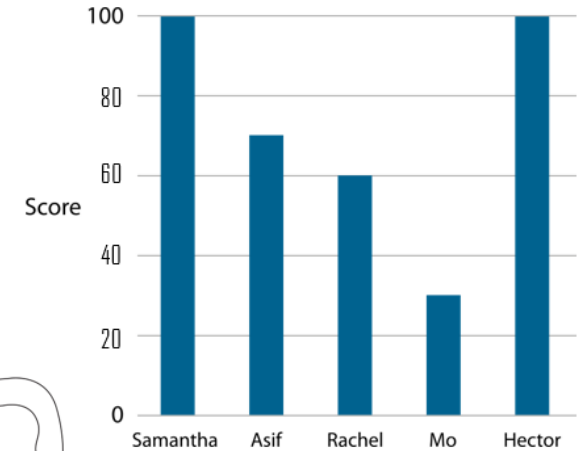
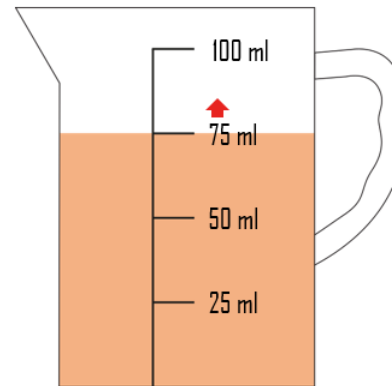
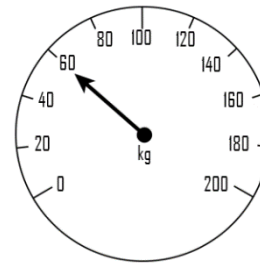
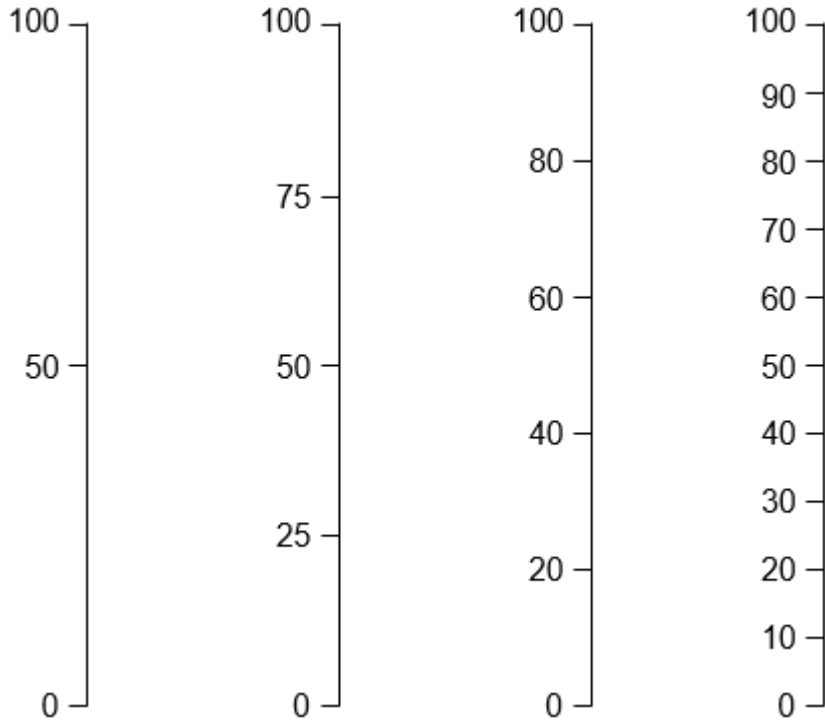
# Number and Place Value

## Year 3

### Reading Scales with 2, 4, 5, or 10 intervals

#### Vocabulary:

Intervals Scales Divisions Equal Parts Whole Value  
Bar model Plus Minus Multiply Divide



Count using these intervals in both horizontal and vertically linear scales.

Find the value of a scale with missing numbers and read scales with numbers included in a variety of contexts.

# Number and Place Value

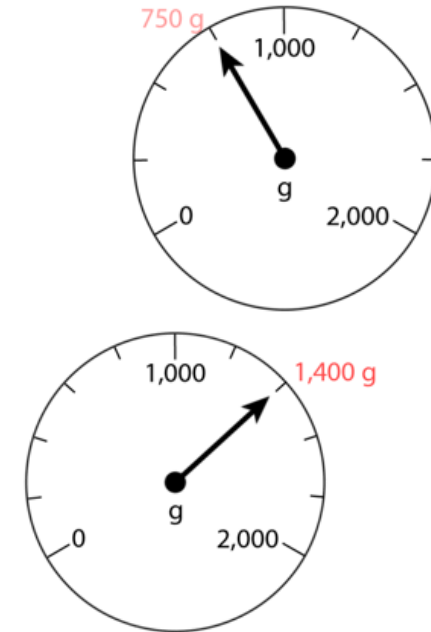
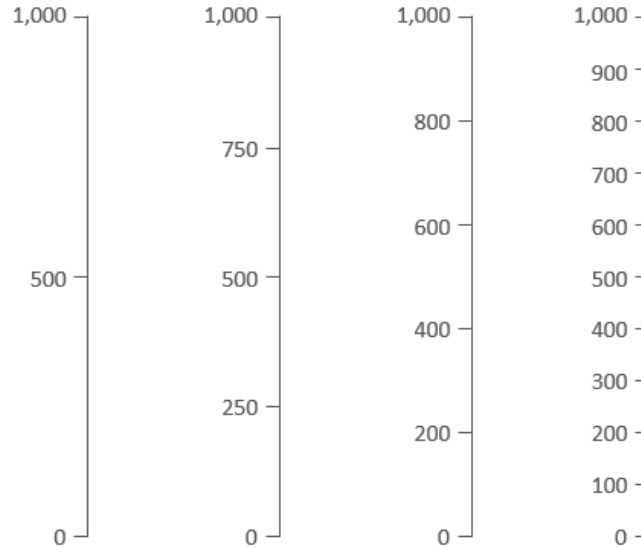
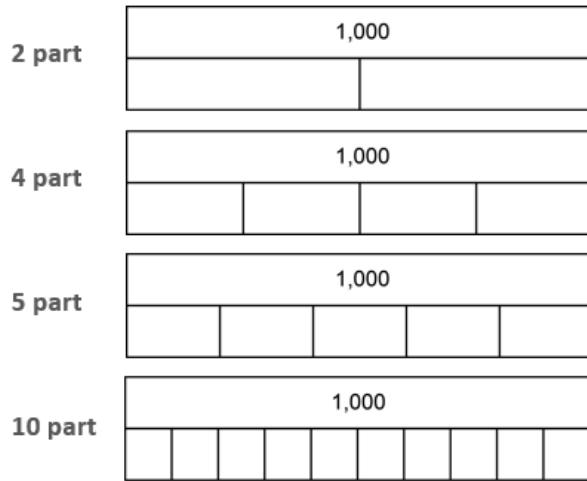
## Year 4

### Reading scales with intervals of 2, 4, 5 or 10.

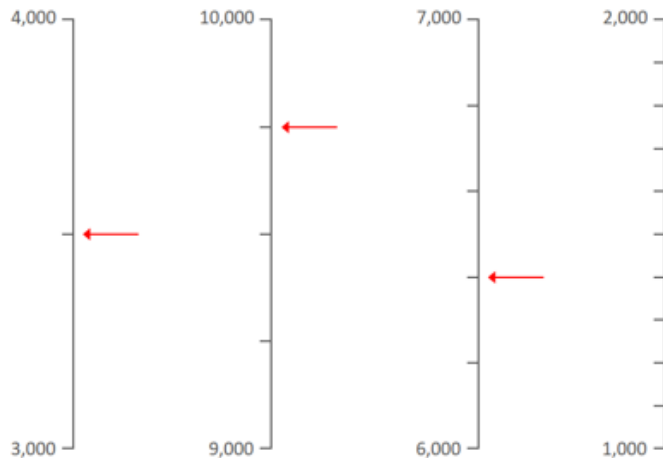
#### Vocabulary:

Intervals Scales Divisions Equal Parts Whole Value  
Bar model Plus Minus Multiply Divide Bar graph Grams

2, 4, 5 and 10 part composition of 1,000

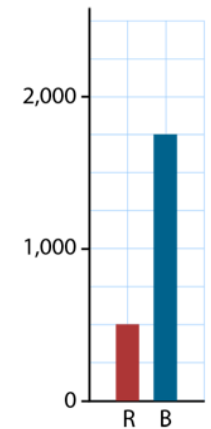
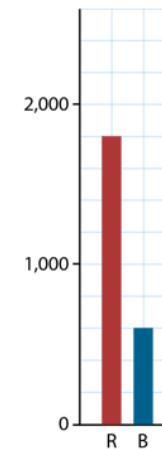


Use the number of intervals given to find values in other contexts (e.g. weighing scales/bar graphs)



Work towards using these intervals with both vertical number lines.

Use the number of intervals given to find the numbers that the arrows are pointing to.



# Number and Place Value

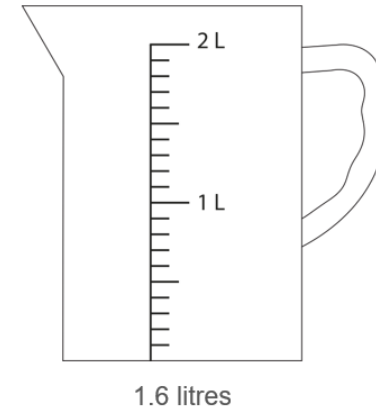
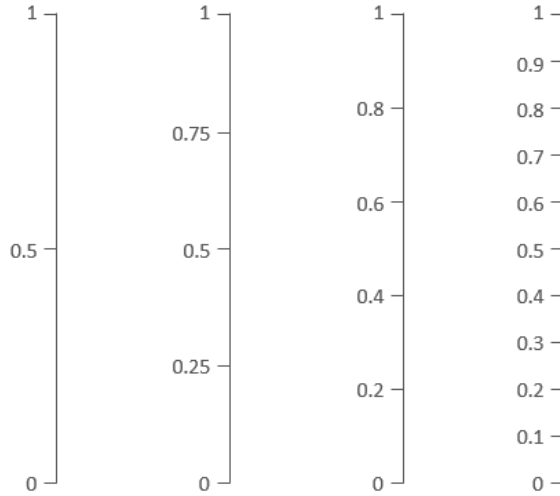
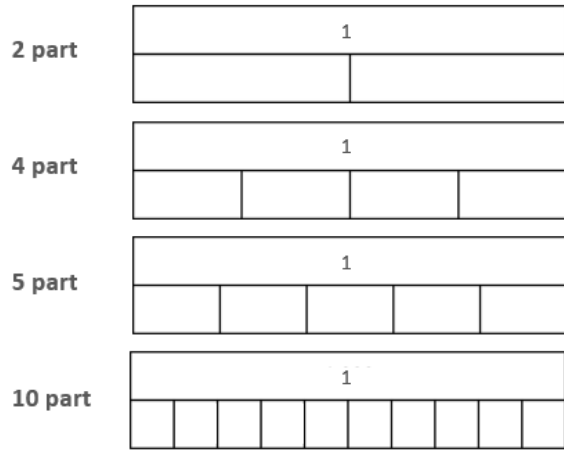
## Year 5

### Reading Scales with 2, 4, 5, or 10 intervals

#### Vocabulary:

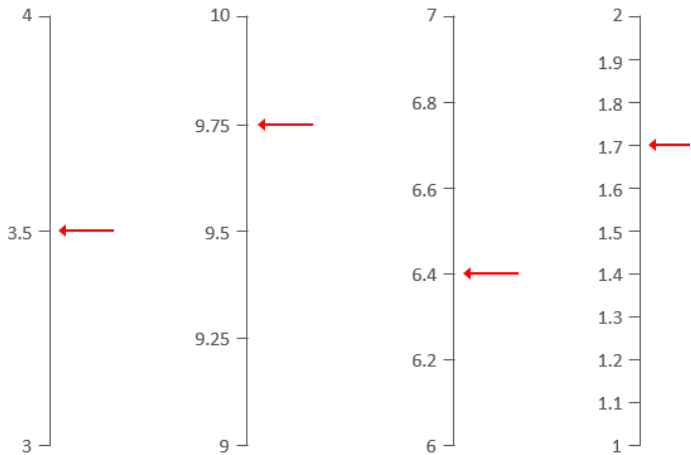
Intervals	Scales	Divisions	Equal Parts	Whole	Value		
Bar model	Plus	Minus	Multiply	Divide	Grams	Millilitres	Litres
Grams	Kilograms	Metres	Centimetres	Estimate			

2, 4, 5 and 10 part composition of 1

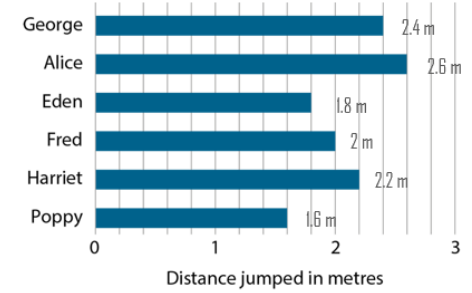
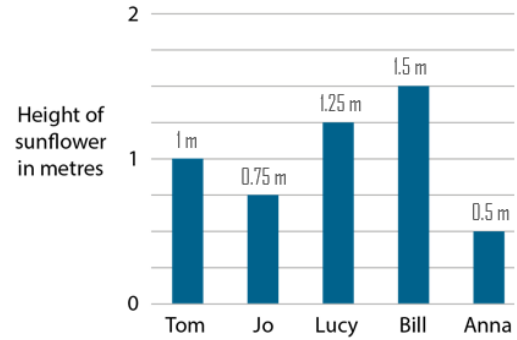
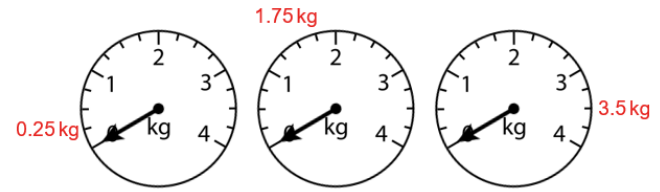


Use the number of intervals given to find values in other contexts (e.g. weighing scales/bar graphs)

Identify intervals and count forwards/backwards using these intervals with both bar models and vertical number lines.



Use the number of intervals given to find the numbers that the arrows are pointing to.



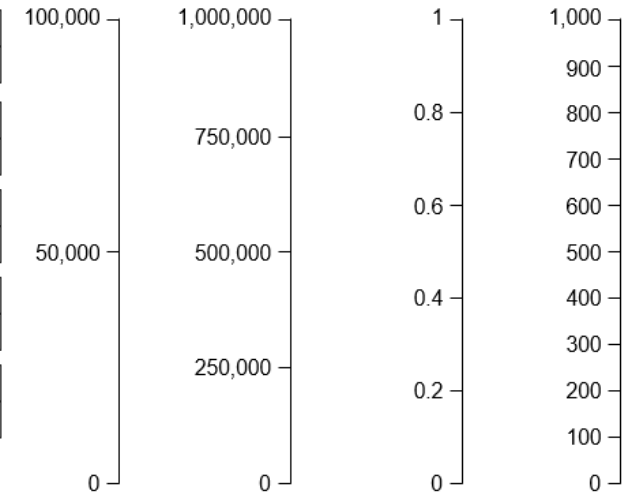
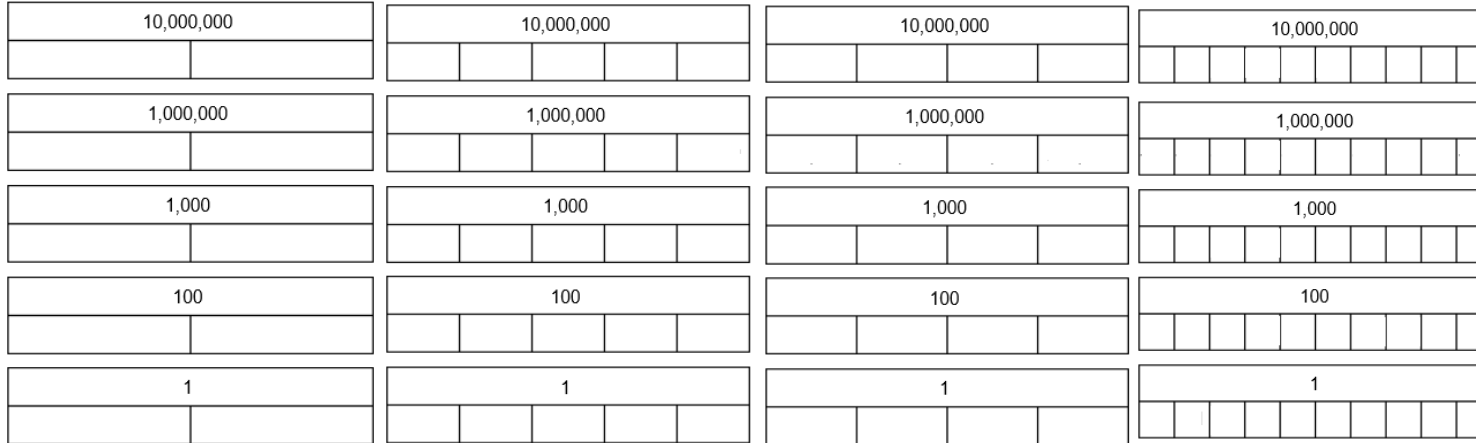
# Number and Place Value

## Year 6

### Reading Scales with 2, 4, 5, or 10 intervals

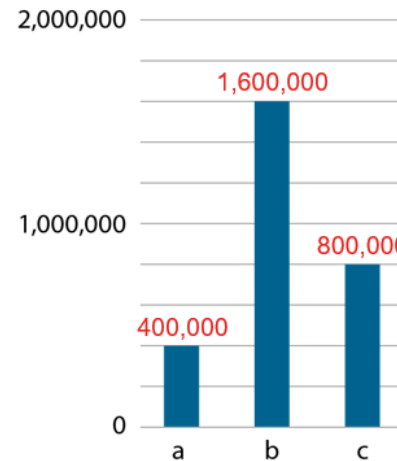
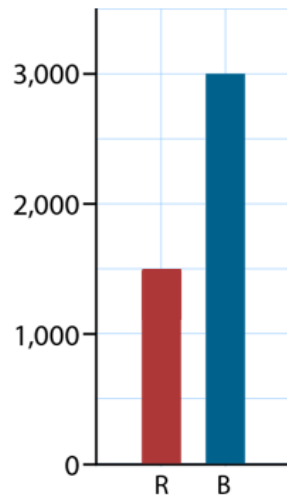
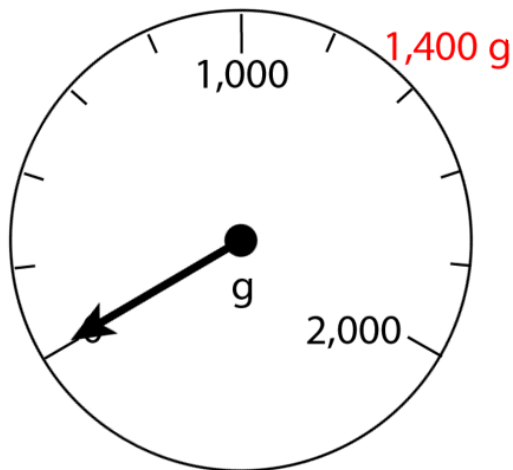
#### Vocabulary:

Ones Tens Hundreds Thousands Ten-thousands Hundred-thousands Millions Ten-Millions  
 Tenths Hundredths Represents Digit Place Value Intervals Scales Divisions  
 Equal Parts Whole Value Bar model Plus Minus Multiply Divide Grams  
 Millilitres Litres Grams Kilograms Metres Centimetres Estimate



**Make connections with different wholes when dividing these into 2, 4, 5, and 10 equal parts.**

**Identify intervals and count forwards/backwards using these intervals with both bar models and vertical number lines.**



**Use the number of intervals given to find values in other contexts (e.g. weighing scales/bar graphs)**